



National Centre
for the Replacement
Refinement & Reduction
of Animals in Research

Malocclusion in mice poster: Terms of use

The NC3Rs has produced an A3-sized poster on malocclusion in mice for display in laboratory animal facility rooms and corridors to help raise awareness about this welfare issue. Further information can be found on the NC3Rs website: <https://nc3rs.org.uk/malocclusion-mice>.

Print specifications

The proper use of this poster requires the images to be clear and easily discernible, therefore it must be printed by a professional print service at the full A3 size.

This poster in this pdf has been setup to professional print standards and has crops and bleed added. Please use the print specification outlined below and the printer will trim the poster to the finished size.

- Finished Size: 420mm x 297mm (A3 portrait)
- Print specification: Full colour
- Paper specification (ideally): 170gsm silk

If you have any issues, or need the file in another format, please contact enquiries@nc3rs.org.uk.

Circulation and reproduction

The poster in this PDF should not be circulated without this covering page attached to it.

Any requests to reproduce this poster, or to include it in any publications or training materials, should be directed to enquiries@nc3rs.org.uk. You should include how, why and where the poster will be used so that we can consider your case for approval. It is helpful to include any associated text, so we can see the context in which the poster will be put.

Copyright: The attached poster and the content within it are owned by the NC3Rs and its partners. The poster should not be adapted, and the content should not be sold or used to generate income.

Malocclusion: spot the signs and check the teeth

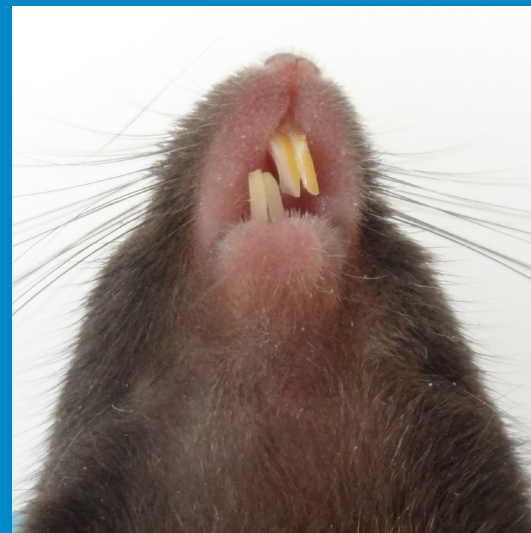
Malocclusion is a dental disorder where misalignment of the teeth leads to overgrowth of the incisors.

The teeth of rodents grow continually. If malocclusion is not identified and addressed quickly, mice will not be able to eat or drink, which can lead to considerable suffering and eventual death.

Everyone who works with mice should know how to spot malocclusion and what action to take when malocclusion is suspected or clearly evident.



Healthy teeth are straight and aligned.



Mice with malocclusion have teeth that are misaligned, which leads to overgrowth.

Know the risks

Risk of malocclusion is increased for:

- Pups around weaning age (2-5 weeks).
- Irradiated animals and oral tumour models.
- Genetically predisposed strains and pedigrees.
- Animals without suitable gnawing enrichment.

Spot the signs

Signs of malocclusion include:

- Being smaller and/or thinner than cage/litter mates.
- Being less active than cage mates.
- Abnormally shaped nose or face.
- Hunched posture or abnormal gait.

Take time to check the teeth

Rodent teeth grow quickly, so a missed diagnosis can rapidly progress into a serious health condition.

**NC
3R^s**

National Centre
for the Replacement
Refinement & Reduction
of Animals in Research

For more information and training resources on malocclusion in mice, visit:

www.nc3rs.org.uk/malocclusion